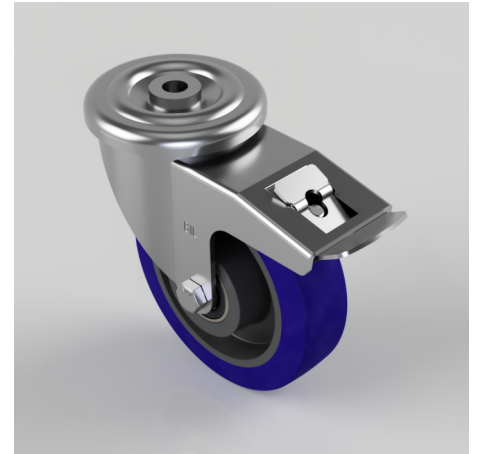


Blue Elastic Rubber 75ShoreA Bolt Hole Swivel Castor Brake 160mm 300kg

Product code: BZMM160RNBJBH16SWB

Pressed steel swivel castor with a 16mm bolt hole fitted with a blue 75 shore A elastic rubber tyre on black nylon centred wheel with ball bearings and a total lock brake. Wheel diameter 160mm, tread width 42mm, overall height 193mm, Load capacity 300kg.



| | |
|--------------------------|---------------------------------------|
| Diameter (mm) | 160 |
| Castor Type | Swivel with Total Lock Brake |
| Fixing Option | Bolt Hole |
| Height (mm) | 193 |
| Wheel Material | Rubber on Nylon |
| Colour / Shore Hardness | Blue Rubber on Nylon Rim / 75 Shore A |
| Temperature Resistance | -20 °C TO +60 °C |
| Bearing Type | Ball |
| Load Capacity (kg) | 300 |
| Tread (mm) | 42 |
| Swivel Radius (mm) | 168 |
| Head Dia (mm) | 114 |
| Fork Thickness (mm) | 4 |
| To Suit Fixing Bolt (mm) | 16 |