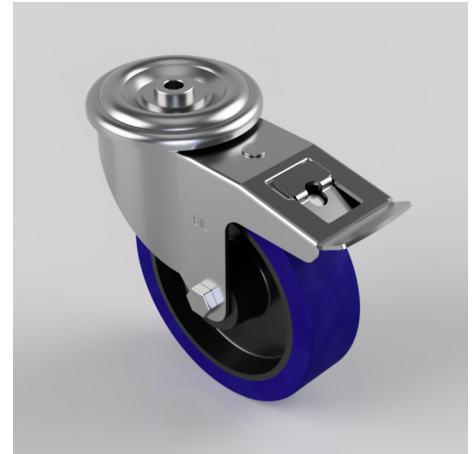


Blue Elastic Rubber 75ShoreA Bolt Hole Swivel Castor Brake 160mm 300kg

Product code: BZMM160RNBBH12SWB

Pressed steel swivel castor with a 12mm bolt hole fixing fitted with a blue 75 shore A elastic rubber tyre on nylon wheel with a roller bearing and swivel wheel brake. Wheel diameter 160mm, tread width 45mm, overall height 195mm, Load capacity 300kg.



Diameter (mm)	160
Castor Type	Swivel with Total Lock Brake
Fixing Option	Bolt Hole
Height (mm)	195
Wheel Material	Rubber on Nylon
Colour / Shore Hardness	Blue Rubber on Nylon Rim / 75 Shore A
Temperature Resistance	-20 °C TO +60 °C
Bearing Type	Roller
Load Capacity (kg)	300
Tread (mm)	45
Swivel Radius (mm)	168
Head Dia (mm)	110
Fork Thickness (mm)	3
To Suit Fixing Bolt (mm)	12