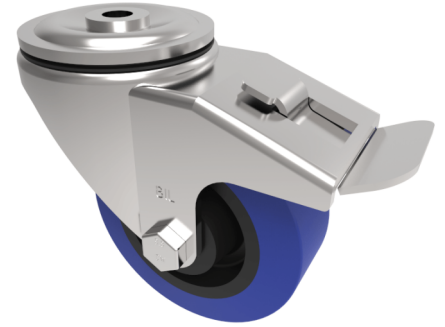


Blue Elastic Rubber 75ShoreA Bolt Hole Swivel Castor Brake 80mm 120kg

Product code: BZH80LRNBBH12SWB

Pressed steel swivel castor with a bolt hole fixing fitted with a blue 75 shore A elastic rubber tyre on black nylon centred wheel with roller bearing and total lock brake. Wheel diameter 80mm, tread width 34mm, overall height 110mm, top plate 105mm x 86mm, hole centres 80mm x 60mm. Load capacity 120kg.



| | |
|--------------------------|---------------------------------------|
| Diameter (mm) | 80 |
| Castor Type | Swivel with Total Lock Brake |
| Fixing Option | Bolt Hole |
| Height (mm) | 110 |
| Wheel Material | Rubber on Nylon |
| Colour / Shore Hardness | Blue Rubber on Nylon Rim / 75 Shore A |
| Temperature Resistance | -20 °C TO +60 °C |
| Bearing Type | Roller |
| Load Capacity (kg) | 120 |
| Tread (mm) | 34 |
| Swivel Radius (mm) | 125 |
| Head Dia (mm) | 76 |
| Fork Thickness (mm) | 4 |
| To Suit Fixing Bolt (mm) | 12 |

BIL GROUP LTD

Porte Marsh Road, Calne, Wiltshire, SN11 9BW

Registered in England No: 2603821

VAT Reg: GB572705729

