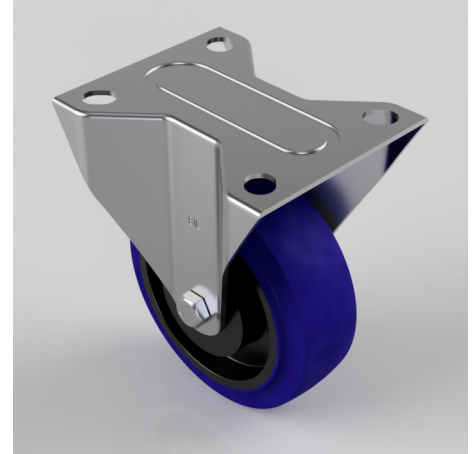


Blue Elastic Rubber 75ShoreA Plate Fixed Castor 100mm 160kg Load

Product code: BZMMF100RN

Pressed steel fixed castor with a top plate fixing fitted with a blue 75 shore A elastic rubber tyre on black nylon centred wheel with a plain bore. Wheel diameter 100mm, tread width 30mm, overall height 128mm, top plate 105mm x 85mm, hole centres 80mm x60mm. Load capacity 160kg.



Diameter (mm)	100
Castor Type	Fixed
Fixing Option	Plate
Height (mm)	128
Wheel Material	Rubber on Nylon
Colour / Shore Hardness	Blue Rubber on Nylon Rim / 75 Shore A
Temperature Resistance	-20 °C TO +60 °C
Bearing Type	Plain
Load Capacity (kg)	160
Tread (mm)	36
Plate Size (mm)	105 X 85
Hole Centres (mm)	80 X 60
Top Plate Thickness (mm)	2
Fork Thickness (mm)	2
To Suit Fixing Bolt (mm)	8

BIL GROUP LTD

Porte Marsh Road, Calne, Wiltshire, SN11 9BW

Registered in England No: 2603821

VAT Reg: GB572705729

