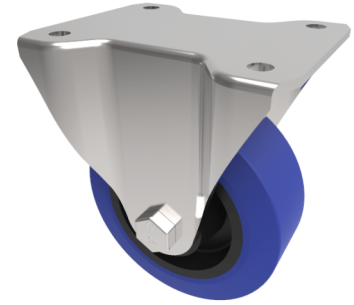


Blue Elastic Rubber 75ShoreA Plate Fixed Castor 100mm 250kg Load

Product code: BZEHF100RNB



Pressed steel fixed castor with flat top plate fixing fitted with a blue 75 shore A elastic rubber tyre on black nylon centre with roller bearing. Wheel diameter 100mm, tread width 36mm, overall height 128mm, plate size 105mm x 86mm, hole centres 80mm x 60mm. Load capacity 250kg.

Diameter (mm)	100
Castor Type	Fixed
Fixing Option	Plate
Height (mm)	128
Wheel Material	Rubber on Nylon
Colour / Shore Hardness	Blue Rubber on Nylon Rim / 75 Shore A
Temperature Resistance	-20 °C TO +60 °C
Bearing Type	Roller
Load Capacity (kg)	250
Tread (mm)	36
Plate Size (mm)	105 x 86
Hole Centres (mm)	80 X 60
Top Plate Thickness (mm)	3
Fork Thickness (mm)	3
To Suit Fixing Bolt (mm)	8