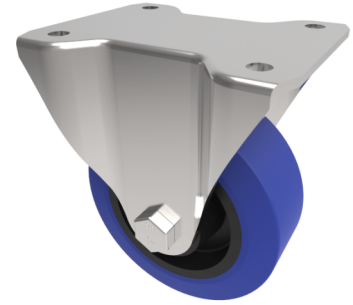


Blue Elastic Rubber 75ShoreA Plate Fixed Castor 100mm 250kg Load

Product code: BZEHF100RNBLP

Pressed steel fixed castor with a top plate fixing fitted with a blue 75 shore A elastic rubber tyre on a black nylon centre with a roller bearing. Wheel diameter 100mm, tread width 38mm, overall height 129mm, top plate 135mm x 110mm, hole centres 105mm x 80mm or 116mm x 92.5mm Load capacity 250kg.



Diameter (mm)	100
Castor Type	Fixed
Fixing Option	Plate
Height (mm)	128
Wheel Material	Rubber on Nylon
Colour / Shore Hardness	Blue Rubber on Nylon Rim / 75 Shore A
Temperature Resistance	-20 °C TO +60 °C
Bearing Type	Roller
Load Capacity (kg)	250
Tread (mm)	36
Plate Size (mm)	135 x 110
Hole Centres (mm)	105/116 x 80/64
Top Plate Thickness (mm)	3
Fork Thickness (mm)	3
To Suit Fixing Bolt (mm)	10

BIL GROUP LTD

Porte Marsh Road, Calne, Wiltshire, SN11 9BW

Registered in England No: 2603821

VAT Reg: GB572705729

