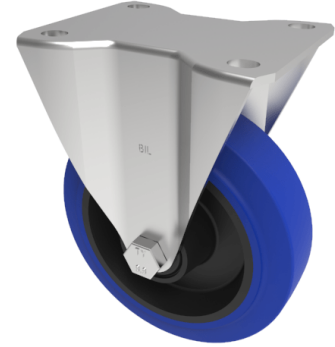


Blue Elastic Rubber 75ShoreA Plate Fixed Castor 125mm 200kg Load

Product code: BZEHF125LRNB

Pressed steel fixed castor with a top plate fixing fitted with a blue elastic rubber tyre on a black nylon centred wheel with a roller bearing. Wheel diameter 125mm, tread width 36mm, overall height 155mm, top plate 105mm x 86mm, hole centres 80mm x 60mm. Load capacity 200kg.



Diameter (mm)	125
Castor Type	Fixed
Fixing Option	Plate
Height (mm)	155
Wheel Material	Rubber on Nylon
Colour / Shore Hardness	Blue Rubber on Nylon Rim / 75 Shore A
Temperature Resistance	-20 °C TO +60 °C
Bearing Type	Roller
Load Capacity (kg)	200
Tread (mm)	40
Plate Size (mm)	105 x 86
Hole Centres (mm)	80 X 60
Top Plate Thickness (mm)	3
Fork Thickness (mm)	3
To Suit Fixing Bolt (mm)	8

BIL GROUP LTD

Porte Marsh Road, Calne, Wiltshire, SN11 9BW

Registered in England No: 2603821

VAT Reg: GB572705729

