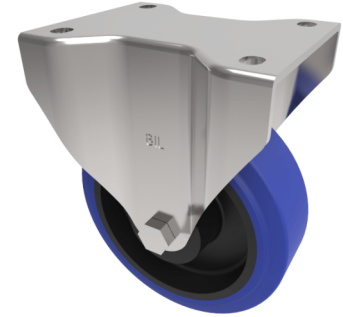


## Blue Elastic Rubber 75ShoreA Plate Fixed Castor 150mm 300kg Load

**Product code: BZPHF150RNB**



Pressed steel fixed castor with a top plate fixing fitted with a blue 75 shore A elastic rubber tyre on a black nylon centre with a roller bearing. Wheel diameter 150mm, tread width 50mm, overall height 188mm, top plate 135mm x 115mm, hole centres 105mm x 80/75mm. Load capacity 300kg.

Diameter (mm)	150
Castor Type	Fixed
Fixing Option	Plate
Height (mm)	190
Wheel Material	Rubber on Nylon
Colour / Shore Hardness	Blue Rubber on Nylon Rim / 75 Shore A
Temperature Resistance	-20 °C TO +60 °C
Bearing Type	Roller
Load Capacity (kg)	300
Tread (mm)	50
Plate Size (mm)	135 x 115
Hole Centres (mm)	105 x 80/75
Top Plate Thickness (mm)	5
Fork Thickness (mm)	5
To Suit Fixing Bolt (mm)	10