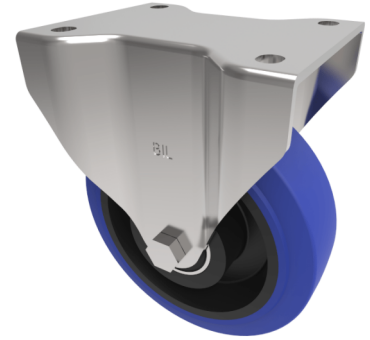


Blue Elastic Rubber 75ShoreA Plate Fixed Castor 160mm 300kg Load

Product code: BZPHF160RNB

Pressed steel fixed castor with a flat plate fixing fitted with a blue 75 shore A elastic rubber tyre on black nylon centred wheel with ball bearings. Wheel diameter 160mm, tread width 42mm, overall height 193mm, plate size 135mm x 110mm, hole centres 105mm x 80mm/75mm. Load capacity 300kg.



Diameter (mm)	160
Castor Type	Fixed
Fixing Option	Plate
Height (mm)	195
Wheel Material	Rubber on Nylon
Colour / Shore Hardness	Blue Rubber on Nylon Rim / 75 Shore A
Temperature Resistance	-20 °C TO +60 °C
Bearing Type	Ball
Load Capacity (kg)	300
Tread (mm)	42
Plate Size (mm)	135 x 115
Hole Centres (mm)	105 x 80/75
Top Plate Thickness (mm)	4
Fork Thickness (mm)	4
To Suit Fixing Bolt (mm)	10

BIL GROUP LTD

Porte Marsh Road, Calne, Wiltshire, SN11 9BW

Registered in England No: 2603821

VAT Reg: GB572705729

