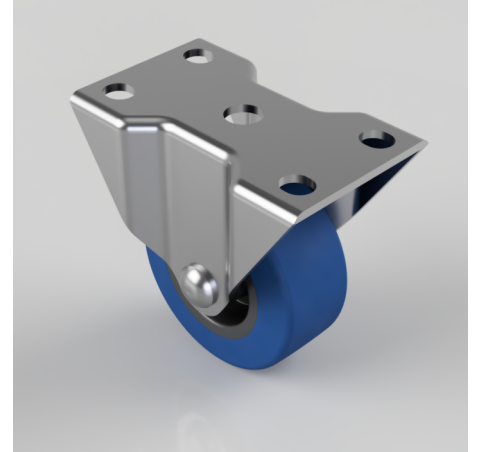


Blue Elastic Rubber 75ShoreA Plate Fixed Castor 50mm 50kg Load

Product code: BZHF50SRN

Pressed steel fixed castor with a top plate fixing fitted with a 65 shore A blue elastic rubber tyred black nylon centre wheel with a plain bore. Wheel diameter 50mm, tread width 22mm, overall height 65mm, top plate 69mm x 43mm, hole centres 56/54mm x 25mm. Load capacity 50kg



Diameter (mm)	50
Castor Type	Fixed
Fixing Option	Plate
Height (mm)	65
Wheel Material	Rubber on Nylon
Colour / Shore Hardness	Blue Elastic Rubber on Nylon Rim / 65 Shore A
Temperature Resistance	-30 °C TO +80 °C
Bearing Type	Plain
Load Capacity (kg)	50
Tread (mm)	22
Plate Size (mm)	69 x 43
Hole Centres (mm)	56/54 X 25
Top Plate Thickness (mm)	2
Fork Thickness (mm)	2
To Suit Fixing Bolt (mm)	6

BIL GROUP LTD

Porte Marsh Road, Calne, Wiltshire, SN11 9BW

Registered in England No: 2603821

VAT Reg: GB572705729

