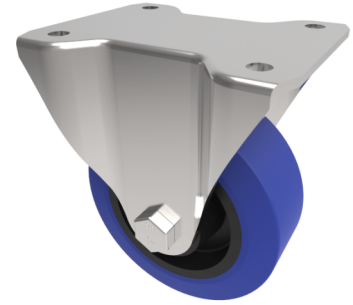


Blue Elastic Rubber 75ShoreA Plate Fixed Castor 80mm 120kg Load

Product code: BZHF80LRNB

Pressed steel fixed castor with top plate fixing fitted with a blue 75 shore A elastic rubber tyre on black nylon centred wheel with roller bearing. Wheel diameter 80mm, tread width 34mm, overall height 110mm, top plate 105mm x 86mm, hole centres 80mm x 60mm. Load capacity 120kg.



Diameter (mm)	80
Castor Type	Fixed
Fixing Option	Plate
Height (mm)	110
Wheel Material	Rubber on Nylon
Colour / Shore Hardness	Blue Rubber on Nylon Rim / 75 Shore A
Temperature Resistance	-20 °C TO +60 °C
Bearing Type	Roller
Load Capacity (kg)	120
Tread (mm)	34
Plate Size (mm)	105 x 86
Hole Centres (mm)	80 X 60
Top Plate Thickness (mm)	4
Fork Thickness (mm)	4
To Suit Fixing Bolt (mm)	8

BIL GROUP LTD

Porte Marsh Road, Calne, Wiltshire, SN11 9BW

Registered in England No: 2603821

VAT Reg: GB572705729

