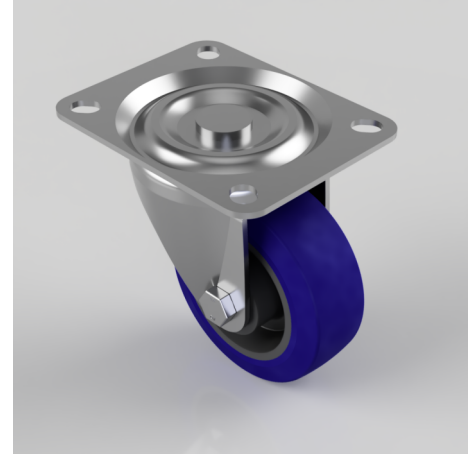


Blue Elastic Rubber 75ShoreA Plate Swivel Castor 100mm 250kg Load

Product code: BZH100RNBLP

Pressed steel swivel castor with a top plate fixing fitted with a blue 75 shore A elastic rubber tyre on black nylon centred wheel with a roller bearing. Wheel diameter 100mm, tread width 40mm, overall height 127mm, top plate 128mm x 102mm, hole centres 105mm x 80mm or 100mm x 76mm. Load capacity 250kg.



| | |
|--------------------------|---------------------------------------|
| Diameter (mm) | 100 |
| Castor Type | Swivel |
| Fixing Option | Plate |
| Height (mm) | 127 |
| Wheel Material | Rubber on Nylon |
| Colour / Shore Hardness | Blue Rubber on Nylon Rim / 75 Shore A |
| Temperature Resistance | -20 °C TO +60 °C |
| Bearing Type | Roller |
| Load Capacity (kg) | 250 |
| Tread (mm) | 40 |
| Swivel Radius (mm) | 77 |
| Plate Size (mm) | 128 x 102 |
| Hole Centres (mm) | 105/100 x 80/76 |
| Top Plate Thickness (mm) | 3 |
| Fork Thickness (mm) | 3 |
| To Suit Fixing Bolt (mm) | 10 |

BIL GROUP LTD

Porte Marsh Road, Calne, Wiltshire, SN11 9BW

Registered in England No: 2603821

VAT Reg: GB572705729

