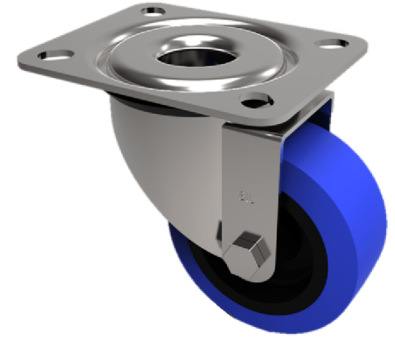


## Blue Elastic Rubber 75ShoreA Plate Swivel Castor 80mm 150kg Load

**Product code: BZMM80RN**



Pressed steel swivel castor with top plate fixing fitted with a 65 shore A blue elastic rubber tyre on black nylon centred wheel with plain bore. Wheel diameter 80mm, tread width 35mm, overall height 105mm, top plate 105mm x 85mm, hole centres 80mm x 60mm. Load capacity 150kg. REACH compliant also PAH-Free rubber to confirm to EU-directive 2005/69/EC

|                          |                                       |
|--------------------------|---------------------------------------|
| Diameter (mm)            | 80                                    |
| Castor Type              | Swivel                                |
| Fixing Option            | Plate                                 |
| Height (mm)              | 105                                   |
| Wheel Material           | Rubber on Nylon                       |
| Colour / Shore Hardness  | Blue Rubber on Nylon Rim / 75 Shore A |
| Temperature Resistance   | -20 °C TO +60 °C                      |
| Bearing Type             | Plain                                 |
| Load Capacity (kg)       | 150                                   |
| Tread (mm)               | 35                                    |
| Swivel Radius (mm)       | 78                                    |
| Plate Size (mm)          | 105 X 85                              |
| Hole Centres (mm)        | 80 X 60                               |
| Top Plate Thickness (mm) | 2                                     |
| Fork Thickness (mm)      | 2                                     |
| To Suit Fixing Bolt (mm) | 8                                     |

### BIL GROUP LTD

Porte Marsh Road, Calne, Wiltshire, SN11 9BW

Registered in England No: 2603821

VAT Reg: GB572705729

