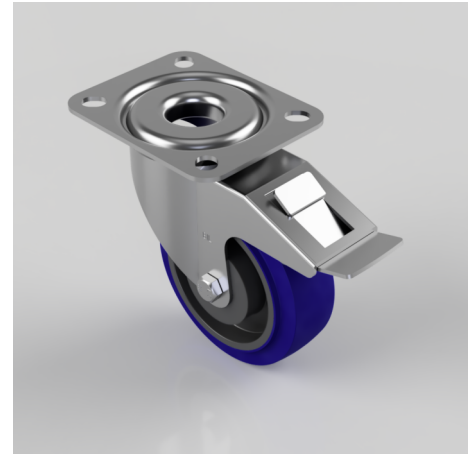


Blue Elastic Rubber 75ShoreA Plate Swivel Castor Brake 100mm 160kg Load

Product code: BZMM100RNSWB

Pressed steel swivel castor with a top plate fixing fitted with a blue 75 shore A elastic rubber tyre on nylon centred wheel with a plain bore and swivel wheel brake. Wheel diameter 100mm, tread width 36mm, overall height 128mm, top plate 105mm x 85mm, hole centres 80mm x 60mm. Load capacity 160kg.



Diameter (mm)	100
Castor Type	Swivel with Total Lock Brake
Fixing Option	Plate
Height (mm)	128
Wheel Material	Rubber on Nylon
Colour / Shore Hardness	Blue Rubber on Nylon Rim / 75 Shore A
Temperature Resistance	-20 °C TO +60 °C
Bearing Type	Plain
Load Capacity (kg)	160
Tread (mm)	36
Swivel Radius (mm)	118
Plate Size (mm)	105 X 85
Hole Centres (mm)	80 X 60
Top Plate Thickness (mm)	2
Fork Thickness (mm)	2
To Suit Fixing Bolt (mm)	8