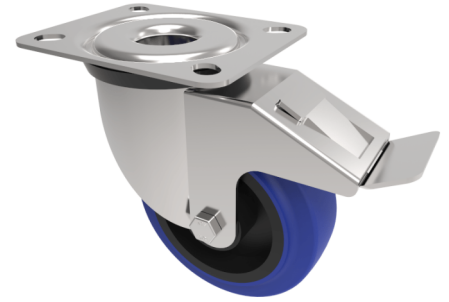


Blue Elastic Rubber 75ShoreA Plate Swivel Castor Brake 100mm 160kg Load

Product code: SSMM100RNBSWB



Grade 304 Pressed stainless steel swivel castor with a top plate fixing fitted with a blue 75 shore A elastic rubber tyre black nylon centred wheel with a roller bearing and total lock brake. Wheel diameter 100mm, tread width 32mm, overall height 128mm, top plate 105mm x 85mm, hole centres 80mm x 60mm. Load capacity 160kg

Diameter (mm)	100
Fixing Option	Plate
Castor Type	Swivel with Total Lock Brake
Height (mm)	128
Wheel Material	Rubber on Nylon
Colour / Shore Hardness	Blue Rubber on Nylon Rim / 75 Shore A
Bearing Type	Roller
Tread (mm)	36
Fork Thickness (mm)	2
To Suit Fixing Bolt (mm)	8
Load Capacity (kg)	160
Temperature Resistance	-20 °C TO +60 °C
Plate Size (mm)	105 X 85
Hole Centres (mm)	80 X 60
Top Plate Thickness (mm)	2
Swivel Radius (mm)	118

BIL GROUP LTD

Porte Marsh Road, Calne, Wiltshire, SN11 9BW

Registered in England No: 2603821

VAT Reg: GB572705729

