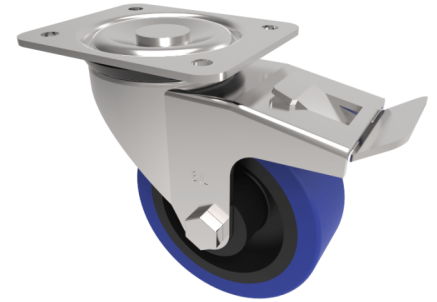


Blue Elastic Rubber 75ShoreA Plate Swivel Castor Brake 100mm 200kg Load

Product code: BZEH100LRNBSWBLP



Pressed steel swivel castor with a top plate fixing fitted with a blue 75 shore A elastic rubber tyre on a black nylon center with a roller bearing with total lock brake. Wheel diameter 100mm, tread width 36mm, overall height 129mm, top plate 135mm x 110mm, hole center's 105mm x 80mm or 116mm x 92.5mm Load capacity 200kg.

| | |
|--------------------------|---------------------------------------|
| Diameter (mm) | 100 |
| Castor Type | Swivel with Total Lock Brake |
| Fixing Option | Plate |
| Height (mm) | 128 |
| Wheel Material | Rubber on Nylon |
| Colour / Shore Hardness | Blue Rubber on Nylon Rim / 75 Shore A |
| Temperature Resistance | -20 °C TO +60 °C |
| Bearing Type | Roller |
| Load Capacity (kg) | 200 |
| Tread (mm) | 36 |
| Swivel Radius (mm) | 116 |
| Plate Size (mm) | 135 x 110 |
| Hole Centres (mm) | 105/116 x 80/64 |
| Top Plate Thickness (mm) | 3 |
| Fork Thickness (mm) | 3 |
| To Suit Fixing Bolt (mm) | 10 |

BIL GROUP LTD

Porte Marsh Road, Calne, Wiltshire, SN11 9BW

Registered in England No: 2603821

VAT Reg: GB572705729

