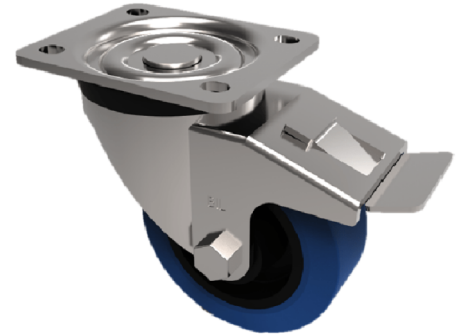


Blue Elastic Rubber 75ShoreA Plate Swivel Castor Brake 100mm 200kg Load

Product code: BZPH100RNBSWB

Pressed steel swivel castor with a top plate fixing fitted with a blue 75 shore A elastic rubber tyre nylon centred wheel with a roller bearing with a total lock brake. Wheel diameter 100mm, tread width 40mm, overall height 129mm, top plate 135mm x 110mm, hole centres 105mm x 80/75mm. Load capacity 200kg.



Diameter (mm)	100
Castor Type	Swivel with Total Lock Brake
Fixing Option	Plate
Height (mm)	132
Wheel Material	Rubber on Nylon
Colour / Shore Hardness	Blue Rubber on Nylon Rim / 75 Shore A
Temperature Resistance	-20 °C TO +60 °C
Bearing Type	Roller
Load Capacity (kg)	200
Tread (mm)	40
Swivel Radius (mm)	116
Plate Size (mm)	135 x 110
Hole Centres (mm)	105 x 80/75
Top Plate Thickness (mm)	4
Fork Thickness (mm)	4
To Suit Fixing Bolt (mm)	10

BIL GROUP LTD

Porte Marsh Road, Calne, Wiltshire, SN11 9BW

Registered in England No: 2603821

VAT Reg: GB572705729

