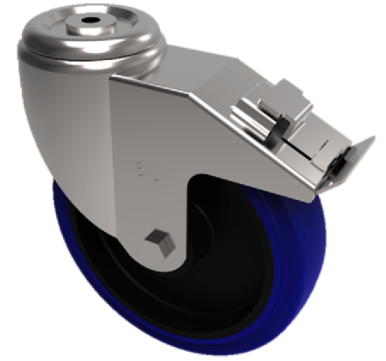


## Blue Elastic Rubber 75ShoreA Plate Swivel Castor Brake 100mm 250kg Load

**Product code: BZH100RNBBHSWBBL**

Pressed steel swivel castor with a 12mm bolt hole fixing fitted with a 65 shore A black elastic rubber tyred black nylon centred wheel with a roller bearing and total lock brake. Wheel diameter 100mm, tread width 36mm, overall height 130mm. Load capacity 250kg.



Diameter (mm)	100
Castor Type	Swivel with Total Lock Brake
Fixing Option	Plate
Height (mm)	128
Wheel Material	Rubber on Nylon
Colour / Shore Hardness	Blue Rubber on Nylon Rim / 75 Shore A
Temperature Resistance	-20 °C TO +60 °C
Bearing Type	Roller
Load Capacity (kg)	250
Tread (mm)	36
Swivel Radius (mm)	90
Plate Size (mm)	105 x 86
Hole Centres (mm)	80 X 60
Top Plate Thickness (mm)	4
Fork Thickness (mm)	4
To Suit Fixing Bolt (mm)	10

### BIL GROUP LTD

Porte Marsh Road, Calne, Wiltshire, SN11 9BW

Registered in England No: 2603821

VAT Reg: GB572705729

