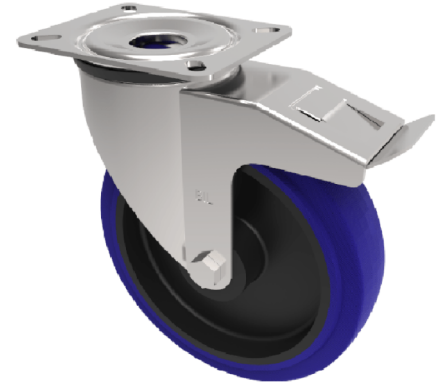


## Blue Elastic Rubber 75ShoreA Plate Swivel Castor Brake 160mm 300kg Load

**Product code: BZP160RNBSWB**

Pressed steel swivel castor with a flat plate fixing fitted with a blue 75 shore A elastic rubber tyre on black nylon centred wheel with a roller bearing and total lock brake. Wheel diameter 160mm, tread width 50mm, overall height 199mm, plate size 135mm x 110mm, hole centres 105mm x 80mm. Load capacity 300kg.



|                          |                                       |
|--------------------------|---------------------------------------|
| Diameter (mm)            | 160                                   |
| Castor Type              | Swivel with Total Lock Brake          |
| Fixing Option            | Plate                                 |
| Height (mm)              | 199                                   |
| Wheel Material           | Rubber on Nylon                       |
| Colour / Shore Hardness  | Blue Rubber on Nylon Rim / 75 Shore A |
| Temperature Resistance   | -20 °C TO +60 °C                      |
| Bearing Type             | Roller                                |
| Load Capacity (kg)       | 300                                   |
| Tread (mm)               | 50                                    |
| Swivel Radius (mm)       | 150                                   |
| Plate Size (mm)          | 135 x 110                             |
| Hole Centres (mm)        | 105 x 80                              |
| Top Plate Thickness (mm) | 6                                     |
| Fork Thickness (mm)      | 4                                     |
| To Suit Fixing Bolt (mm) | 12                                    |

### BIL GROUP LTD

Porte Marsh Road, Calne, Wiltshire, SN11 9BW

Registered in England No: 2603821

VAT Reg: GB572705729

