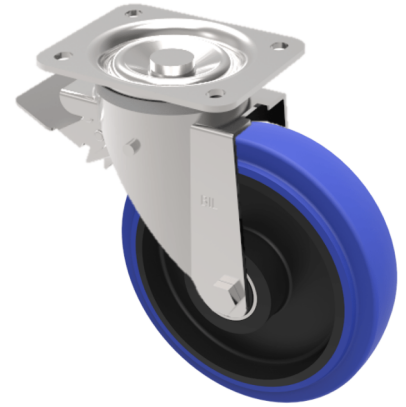


Blue Elastic Rubber 75ShoreA Plate Swivel Castor Brake 200mm 350kg Load

Product code: BZWB200RNBJSWB

Pressed steel swivel castor with a top plate fixing fitted with a blue 75 shore A elastic rubber tyre on a black nylon centred wheel with ball bearings and total lock brake. Wheel diameter 200mm, tread width 46mm, overall height 238mm, top plate 135mm x 110mm, hole centres 105mm x 80/75mm. Load capacity 350kg.



Diameter (mm)	200
Castor Type	Swivel with Total Lock Brake
Fixing Option	Plate
Height (mm)	238
Wheel Material	Rubber on Nylon
Colour / Shore Hardness	Blue Rubber on Nylon Rim / 75 Shore A
Temperature Resistance	-20 °C TO +60 °C
Bearing Type	Ball
Load Capacity (kg)	350
Tread (mm)	46
Swivel Radius (mm)	155
Plate Size (mm)	135 x 110
Hole Centres (mm)	105 x 80
Top Plate Thickness (mm)	4
Fork Thickness (mm)	3
Brake Type	Leading Brake
To Suit Fixing Bolt (mm)	10

BIL GROUP LTD

Porte Marsh Road, Calne, Wiltshire, SN11 9BW

Registered in England No: 2603821

VAT Reg: GB572705729

