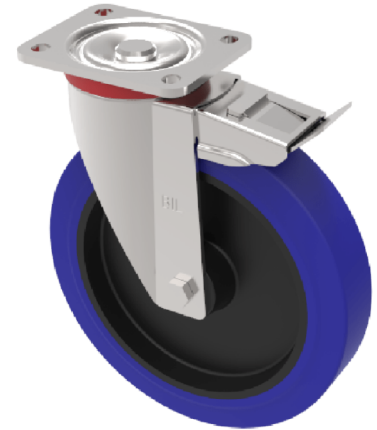


Blue Elastic Rubber 75ShoreA Plate Swivel Castor Brake 250mm 500kg Load

Product code: BZP250RNBJSWB

Pressed steel swivel castor with a flat plate fixing fitted with a blue elastic rubber tyre on black nylon centred wheel with ball bearings and total lock brake. Wheel diameter 250mm, tread width 50mm, overall height 300mm, plate size 135mm x 110mm, hole centres 105mm x 80mm . Load capacity 500kg.



Diameter (mm)	250
Castor Type	Swivel with Total Lock Brake
Fixing Option	Plate
Height (mm)	292
Wheel Material	Rubber on Nylon
Colour / Shore Hardness	Blue Rubber on Nylon Rim / 75 Shore A
Temperature Resistance	-20 °C TO +60 °C
Bearing Type	Ball
Load Capacity (kg)	500
Tread (mm)	50
Swivel Radius (mm)	180
Plate Size (mm)	135 x 110
Hole Centres (mm)	105 x 80
Top Plate Thickness (mm)	6
Fork Thickness (mm)	4
To Suit Fixing Bolt (mm)	12

BIL GROUP LTD

Porte Marsh Road, Calne, Wiltshire, SN11 9BW

Registered in England No: 2603821

VAT Reg: GB572705729

