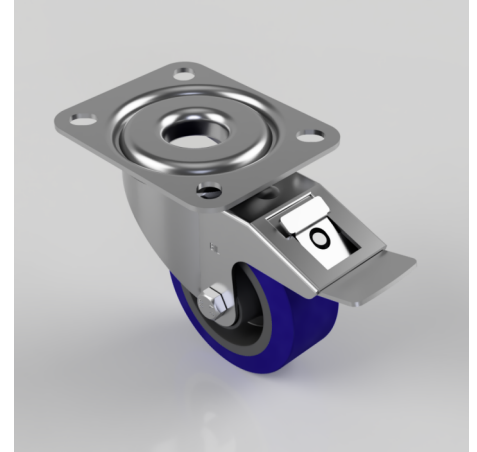


## Blue Elastic Rubber 75ShoreA Plate Swivel Castor Brake 80mm 100kg Load

**Product code: BZMM80LRNBSWB**

Pressed steel swivel castor with top plate fixing fitted with a blue 75 shore A elastic rubber tyre on black nylon centred wheel with roller bearing and a total lock brake. Wheel diameter 80mm, tread width 34mm, overall height 105mm, top plate 105mm x 85mm, hole centres 80mm x 60mm. Load capacity 100kg.



Diameter (mm)	80
Castor Type	Swivel with Total Lock Brake
Fixing Option	Plate
Height (mm)	105
Wheel Material	Rubber on Nylon
Colour / Shore Hardness	Blue Rubber on Nylon Rim / 75 Shore A
Temperature Resistance	-20 °C TO +60 °C
Bearing Type	Roller
Load Capacity (kg)	100
Tread (mm)	34
Swivel Radius (mm)	111
Plate Size (mm)	105 X 85
Hole Centres (mm)	80 X 60
Top Plate Thickness (mm)	2
Fork Thickness (mm)	2
To Suit Fixing Bolt (mm)	8

### BIL GROUP LTD

Porte Marsh Road, Calne, Wiltshire, SN11 9BW

Registered in England No: 2603821

VAT Reg: GB572705729

