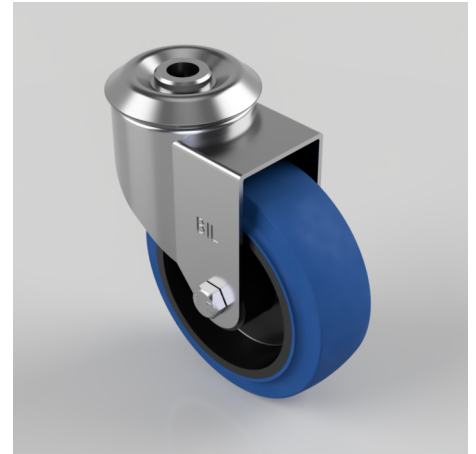


Blue Elastic Rubber Bolt Hole Swivel Castor 100mm 125kg Load

Product code: BZBC100SRNBBH12

Pressed steel swivel castor with 12mm bolt hole fitted with a blue 65 shore A elastic rubber tyre on black polypropylene centred wheel with a roller bearing. Wheel diameter 100mm, tread width 36mm, overall height 126mm, Load capacity 125kg.



Diameter (mm)	100
Fixing Option	Bolt Hole
Castor Type	Swivel
Head Dia (mm)	60
Height (mm)	126
Bearing Type	Roller
Swivel Radius (mm)	88
Wheel Material	Rubber on Nylon
Colour / Shore Hardness	Blue Elastic Rubber on Nylon Rim / 65 Shore A
Fork Thickness (mm)	2
Temperature Resistance	-30 °C TO +80 °C
To Suit Fixing Bolt (mm)	12
Tread (mm)	36
Load Capacity (kg)	125