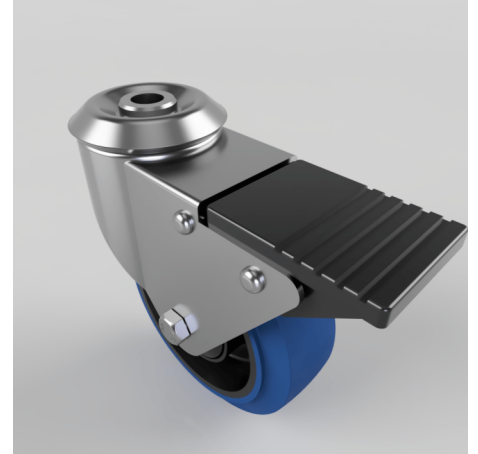


Blue Elastic Rubber Bolt Hole Swivel Castor Brake 125mm 125kg Load

Product code: BZBC100SRNBJBH12SWB

Pressed steel swivel castor with a 12mm bolt hole fixing fitted with a 65 shore A blue elastic rubber tyre on a black nylon centre wheel with ball bearing and total lock brake. Wheel diameter 100mm, tread width 36mm, overall height 128mm, plate size 102mm x 84mm, hole centres 80mm x 60mm. Load capacity 125kg. REACH compliant also PAH-Free rubber to confirm to EU-directive 2005/69/EC



Diameter (mm)	100
Fixing Option	Bolt Hole
Castor Type	Swivel with Total Lock Brake
Head Dia (mm)	60
Height (mm)	126
Bearing Type	Ball
Swivel Radius (mm)	115
Wheel Material	Rubber on Nylon
Colour / Shore Hardness	Blue Elastic Rubber on Nylon Rim / 65 Shore A
Fork Thickness (mm)	2
Temperature Resistance	-30 °C TO +80 °C
To Suit Fixing Bolt (mm)	12
Tread (mm)	36
Load Capacity (kg)	125

BIL GROUP LTD

Porte Marsh Road, Calne, Wiltshire, SN11 9BW

Registered in England No: 2603821

VAT Reg: GB572705729

