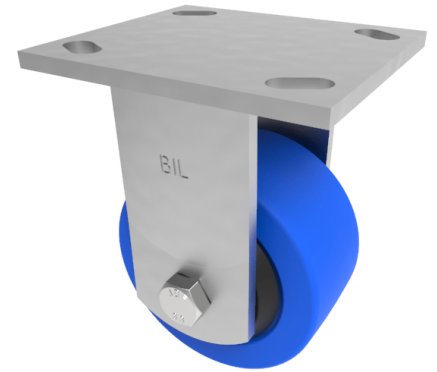


## Blue Elastic Rubber Plate Fixed Castor 125mm 275kg Load

**Product code: BZJF125SRNBJ/USA**

Fabricated fixed castor with a flat plate fixing fitted with 65 shore A blue elastic rubber tyre on a black nylon centred wheel with ball bearings. Wheel diameter 125mm, tread width 50mm, overall height 165mm, top plate 115mm x 102mm, hole centres 92mm x 67mm or 76mm x 76mm, load capacity 275kg. REACH compliant also PAH-Free rubber to confirm to EU-directive 2005/69/EC



Diameter (mm)	125
Fixing Option	Plate
Castor Type	Fixed
Bearing Type	Ball
Height (mm)	165
Plate Size (mm)	115 x 102
Hole Centres (mm)	76/92 x 76/67
To Suit Fixing Bolt (mm)	10
Wheel Material	Rubber on Nylon
Colour / Shore Hardness	Blue Elastic Rubber on Nylon Rim / 65 Shore A
Temperature Resistance	-30 °C TO +80 °C
Top Plate Thickness (mm)	5.5
Fork Thickness (mm)	5.5
Load Capacity (kg)	275
Tread (mm)	50

### BIL GROUP LTD

Porte Marsh Road, Calne, Wiltshire, SN11 9BW

Registered in England No: 2603821

VAT Reg: GB572705729

