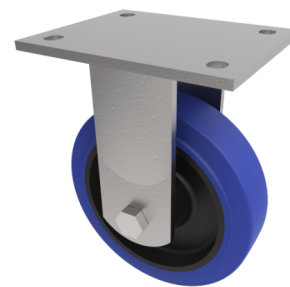


Blue Elastic Rubber Plate Fixed Castor 125mm 275kg Load

Product code: BZJF125SRNBJ



Fabricated fixed castor with a flat plate fixing fitted with 65 shore A blue elastic rubber tyre on a black nylon centred wheel with ball bearings. Wheel diameter 125mm, tread width 50mm, overall height 165mm, plate size 135mm x 110mm, hole centres 105mm x 80mm. Load capacity 275kg. REACH compliant also PAH-Free rubber to confirm to EU-directive 2005/69/EC

Diameter (mm)	125
Fixing Option	Plate
Castor Type	Fixed
Bearing Type	Ball
Height (mm)	165
Plate Size (mm)	135 x 110
Hole Centres (mm)	105 x 80
To Suit Fixing Bolt (mm)	10
Wheel Material	Rubber on Nylon
Colour / Shore Hardness	Blue Elastic Rubber on Nylon Rim / 65 Shore A
Temperature Resistance	-30 °C TO +80 °C
Top Plate Thickness (mm)	5.5
Fork Thickness (mm)	5.5
Load Capacity (kg)	275
Tread (mm)	50

BIL GROUP LTD

Porte Marsh Road, Calne, Wiltshire, SN11 9BW

Registered in England No: 2603821

VAT Reg: GB572705729

