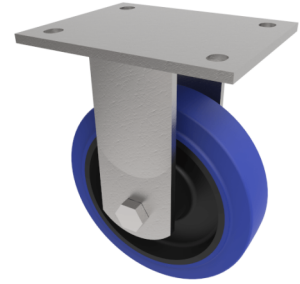


Blue Elastic Rubber Plate Fixed Castor 150mm 300kg Load

Product code: BZEJF150SRNBJ



Fabricated fixed castor with a top plate fixing fitted with a blue 65 shore A elastic rubber tyred nylon centred wheel with ball bearings. Wheel diameter 150mm, tread width 40mm, overall height 190mm, plate size 135mm x 110mm, hole centres 105mm x 80mm. Load capacity 300kg. REACH compliant also PAH-Free rubber to confirm to EU-directive 2005/69/EC

| | |
|--------------------------|---|
| Diameter (mm) | 150 |
| Fixing Option | Plate |
| Castor Type | Fixed |
| Bearing Type | Ball |
| Height (mm) | 190 |
| Plate Size (mm) | 135 x 110 |
| Hole Centres (mm) | 105 x 80 |
| To Suit Fixing Bolt (mm) | 12 |
| Wheel Material | Rubber on Nylon |
| Colour / Shore Hardness | Blue Elastic Rubber on Nylon Rim / 65 Shore A |
| Temperature Resistance | -30 °C TO +80 °C |
| Top Plate Thickness (mm) | 5.5 |
| Fork Thickness (mm) | 5.5 |
| Load Capacity (kg) | 300 |
| Tread (mm) | 40 |

BIL GROUP LTD

Porte Marsh Road, Calne, Wiltshire, SN11 9BW

Registered in England No: 2603821

VAT Reg: GB572705729

