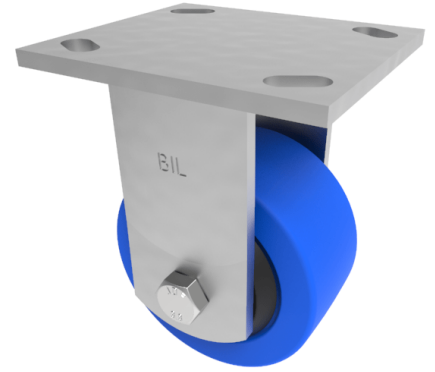


Blue Elastic Rubber Plate Fixed Castor 150mm 300kg Load

Product code: BZJF150SRNBJ/USA

Fabricated fixed castor with a top plate fixing fitted with a blue 65 shore A elastic rubber tyre nylon centred wheel with ball bearings bearing. Wheel diameter 150mm, tread width 40mm, overall height 190mm, plate size 115mm x 102mm, hole centres 92mm x 67mm and 76mm x 76mm. Load capacity 300kg. REACH compliant also PAH-Free rubber to confirm to EU-directive 2005/69/EC



Diameter (mm)	150
Fixing Option	Plate
Castor Type	Fixed
Bearing Type	Ball
Height (mm)	190
Plate Size (mm)	115 x 102
Hole Centres (mm)	76/92 x 76/67
To Suit Fixing Bolt (mm)	10
Wheel Material	Rubber on Nylon
Colour / Shore Hardness	Blue Elastic Rubber on Nylon Rim / 65 Shore A
Temperature Resistance	-30 °C TO +80 °C
Top Plate Thickness (mm)	5.5
Fork Thickness (mm)	5.5
Load Capacity (kg)	300
Tread (mm)	40

BIL GROUP LTD

Porte Marsh Road, Calne, Wiltshire, SN11 9BW

Registered in England No: 2603821

VAT Reg: GB572705729

