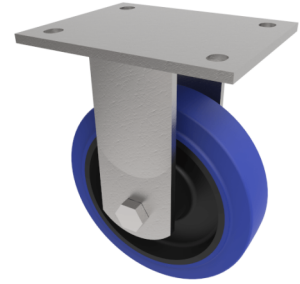


## Blue Elastic Rubber Plate Fixed Castor 200mm 500kg Load

**Product code: BZJF200SRNB**



Fabricated fixed castor with a top plate fixing fitted with a blue 65 shore A elastic rubber tyre on black nylon centre wheel with ball bearings. Wheel diameter 200mm, tread width 50mm, overall height 240mm, plate size 135mm x 110mm, hole centres 105mm x 80mm. Load capacity 500kg.

Diameter (mm)	200
Fixing Option	Plate
Castor Type	Fixed
Bearing Type	Ball
Height (mm)	240
Plate Size (mm)	135 x 110
Hole Centres (mm)	105 x 80
To Suit Fixing Bolt (mm)	10
Wheel Material	Rubber on Nylon
Colour / Shore Hardness	Blue Elastic Rubber on Nylon Rim / 65 Shore A
Temperature Resistance	-30 °C TO +80 °C
Top Plate Thickness (mm)	5.5
Fork Thickness (mm)	5.5
Load Capacity (kg)	500
Tread (mm)	50