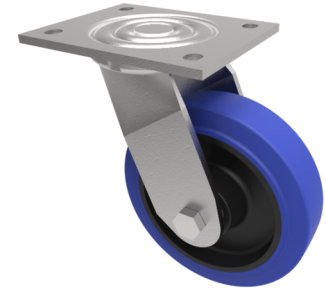


Blue Elastic Rubber Plate Swivel Castor 100mm 275kg Load

Product code: BZEJ100SRNB



Fabricated swivel castor with a top plate fixing fitted with 65 shore A blue elastic rubber tyred black nylon centred wheel with ball bearings. Wheel diameter 100mm, tread width 50mm, overall height 143mm, top plate 135mm x 110mm, hole centres 105mm x 80mm. load capacity 275kg. REACH compliant also PAH-Free rubber to confirm to EU-directive 2005/69/EC

Diameter (mm)	100
Fixing Option	Plate
Castor Type	Swivel
Bearing Type	Ball
Height (mm)	142
Plate Size (mm)	135 x 110
Hole Centres (mm)	105 x 80
To Suit Fixing Bolt (mm)	12
Wheel Material	Rubber on Nylon
Colour / Shore Hardness	Blue Elastic Rubber on Nylon Rim / 65 Shore A
Temperature Resistance	-30 °C TO +80 °C
Top Plate Thickness (mm)	5.5
Fork Thickness (mm)	5.5
Swivel Radius (mm)	90
Load Capacity (kg)	275
Tread (mm)	50

BIL GROUP LTD

Porte Marsh Road, Calne, Wiltshire, SN11 9BW

Registered in England No: 2603821

VAT Reg: GB572705729

