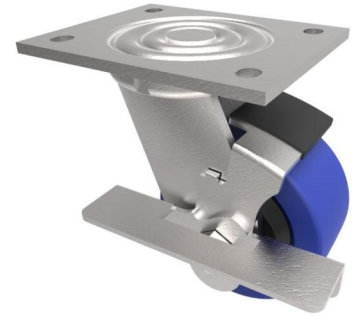


## Blue Elastic Rubber Plate Swivel Castor Brake 100mm 275kg Load

**Product code: BZJ100SRNBJBK**



Fabricated swivel castor with a top plate fixing fitted with 65 shore A blue elastic rubber tyred black nylon centred wheel with ball bearings and side fitting wheel brake. Wheel diameter 100mm, tread width 50mm, overall height 143mm, top plate 135mm x 110mm, hole centres 105mm x 80mm. load capacity 275kg. REACH compliant also PAH-Free rubber to confirm to EU-directive 2005/69/EC

Diameter (mm)	100
Fixing Option	Plate
Castor Type	Swivel with Wheel Brake
Bearing Type	Ball
Height (mm)	143
Plate Size (mm)	135 x 110
Hole Centres (mm)	105 x 80
To Suit Fixing Bolt (mm)	10
Wheel Material	Rubber on Nylon
Colour / Shore Hardness	Blue Elastic Rubber on Nylon Rim / 65 Shore A
Temperature Resistance	-30 °C TO +80 °C
Top Plate Thickness (mm)	5.5
Fork Thickness (mm)	5.5
Swivel Radius (mm)	90
Load Capacity (kg)	275
Tread (mm)	50

### BIL GROUP LTD

Porte Marsh Road, Calne, Wiltshire, SN11 9BW

Registered in England No: 2603821

VAT Reg: GB572705729