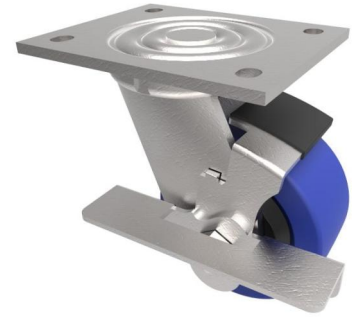


Blue Elastic Rubber Plate Swivel Castor Brake 150mm 300kg Load

Product code: BZEJ150SRNBJBK



Fabricated swivel castor with a top plate fixing fitted with a blue 65 shore A elastic rubber tyred nylon centred wheel with ball bearings and side fitting brake. Wheel diameter 150mm, tread width 40mm, overall height 190mm, plate size 135mm x 110mm, hole centres 105mm x 80mm. Load capacity 300kg. REACH compliant also PAH-Free rubber to confirm to EU-directive 2005/69/EC

Diameter (mm)	150
Fixing Option	Plate
Castor Type	Swivel with Wheel Brake
Bearing Type	Ball
Height (mm)	190
Plate Size (mm)	135 x 110
Hole Centres (mm)	105 x 80
To Suit Fixing Bolt (mm)	12
Wheel Material	Rubber on Nylon
Colour / Shore Hardness	Blue Elastic Rubber on Nylon Rim / 65 Shore A
Temperature Resistance	-30 °C TO +80 °C
Top Plate Thickness (mm)	5.5
Fork Thickness (mm)	5.5
Swivel Radius (mm)	122
Load Capacity (kg)	300
Tread (mm)	40

BIL GROUP LTD

Porte Marsh Road, Calne, Wiltshire, SN11 9BW

Registered in England No: 2603821

VAT Reg: GB572705729

