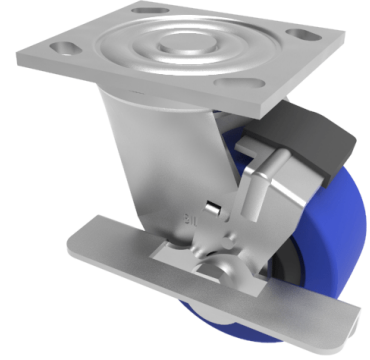


Blue Elastic Rubber Plate Swivel Castor Brake 200mm 500kg Load

Product code: BZJ200SRNBJBK/USA

Fabricated swivel castor with a top plate fixing fitted with a blue 65 shore A elastic rubber tyre black nylon centre wheel with ball bearings and side fitting wheel brake. Wheel diameter 200mm, tread width 50mm, overall height 240mm, plate size 115mm x 102mm, hole centres 92mm x 67mm and 76mm x 76mm. Load capacity 500kg.



Diameter (mm)	200
Fixing Option	Plate
Castor Type	Swivel with Wheel Brake
Bearing Type	Ball
Height (mm)	240
Plate Size (mm)	115 x 102
Hole Centres (mm)	76/92 x 76/67
To Suit Fixing Bolt (mm)	10
Wheel Material	Rubber on Nylon
Colour / Shore Hardness	Blue Elastic Rubber on Nylon Rim / 65 Shore A
Temperature Resistance	-30 °C TO +80 °C
Top Plate Thickness (mm)	5.5
Fork Thickness (mm)	5.5
Swivel Radius (mm)	154
Load Capacity (kg)	500
Tread (mm)	50

BIL GROUP LTD

Porte Marsh Road, Calne, Wiltshire, SN11 9BW

Registered in England No: 2603821

VAT Reg: GB572705729

