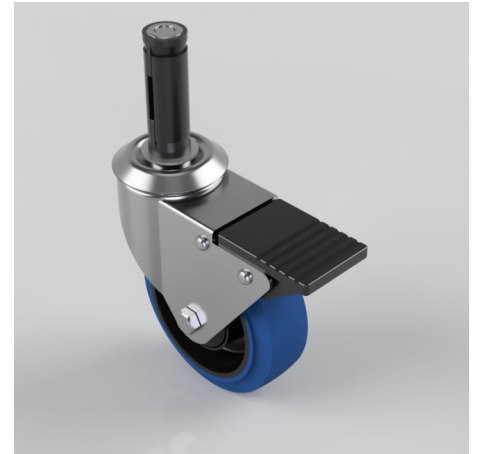


Blue Elastic Rubber Swivel Braked Expander 100mm 125kg

Product code: BZBC100SRNBJSWBEXR21

Pressed steel swivel castor fitted with a 21.5mm to 24mm round expander and a blue 65 shore A elastic rubber tyre on black polypropylene centred wheel with a ball bearing and total lock brake. Wheel diameter 100mm, tread width 36mm, overall height 126mm, Load capacity 125kg.



Height (mm)	128
Tread (mm)	36
Bearing Type	Ball
Diameter (mm)	100
Wheel Material	Rubber on Nylon
Fixing Option	Bolt Hole, Expander
Castor Type	Swivel with Total Lock Brake
Load Capacity (kg)	125
Swivel Radius (mm)	115
Expander Type (mm)	Round Expander to Suit 21.5 - 24
Fork Thickness (mm)	2
Head Dia (mm)	60
Colour / Shore Hardness	Blue Elastic Rubber on Nylon Rim / 65 Shore A
Temperature Resistance	-30 °C TO +80 °C