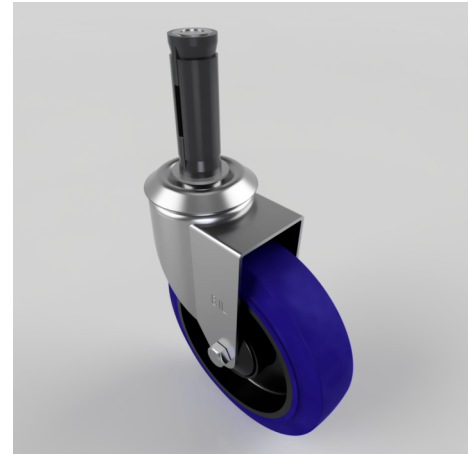


Blue Elastic Rubber Swivel Expander 125mm 125kg

Product code: BZBC125SRNBJEXR21

Pressed steel swivel castor fitted with a 21.5mm to 24mm round expander and a blue 65 shore A elastic rubber tyre on black polypropylene centred wheel with a ball bearing. Wheel diameter 125mm, tread width 36mm, overall height 126mm, Load capacity 125kg.



| | |
|-------------------------|---|
| Height (mm) | 154 |
| Tread (mm) | 36 |
| Bearing Type | Ball |
| Diameter (mm) | 125 |
| Wheel Material | Rubber on Nylon |
| Fixing Option | Bolt Hole, Expander |
| Castor Type | Swivel |
| Load Capacity (kg) | 125 |
| Swivel Radius (mm) | 100 |
| Expander Type (mm) | Round Expander to Suit 21.5 - 24 |
| Fork Thickness (mm) | 2 |
| Head Dia (mm) | 60 |
| Colour / Shore Hardness | Blue Elastic Rubber on Nylon Rim / 65 Shore A |
| Temperature Resistance | -30 °C TO +80 °C |

BIL GROUP LTD

Porte Marsh Road, Calne, Wiltshire, SN11 9BW

Registered in England No: 2603821

VAT Reg: GB572705729

