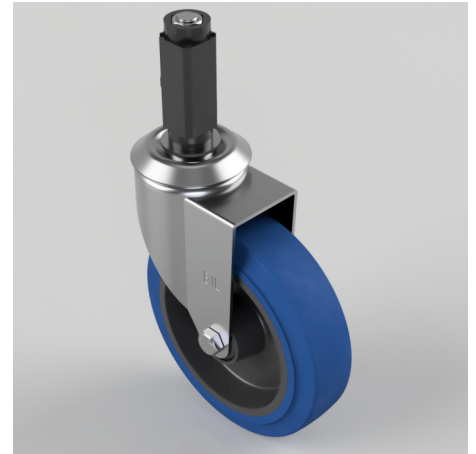


## Blue Elastic Rubber Swivel Expander 125mm 125kg

**Product code: BZBC125SRNBEXS21**

Pressed steel swivel castor fitted with a 21.5mm to 24mm square expander and a blue 65 shore A elastic rubber tyre on black polypropylene centred wheel with a roller bearing. Wheel diameter 125mm, tread width 36mm, overall height 126mm, Load capacity 125kg.



Height (mm)	154
Tread (mm)	36
Bearing Type	Roller
Diameter (mm)	125
Wheel Material	Rubber on Nylon
Fixing Option	Bolt Hole, Expander
Castor Type	Swivel
Load Capacity (kg)	125
Swivel Radius (mm)	100
Expander Type (mm)	Square Expander to Suit 21.5 - 24
Fork Thickness (mm)	2
Head Dia (mm)	60
Colour / Shore Hardness	Blue Elastic Rubber on Nylon Rim / 65 Shore A
Temperature Resistance	-30 °C TO +80 °C

### BIL GROUP LTD

Porte Marsh Road, Calne, Wiltshire, SN11 9BW

Registered in England No: 2603821

VAT Reg: GB572705729

