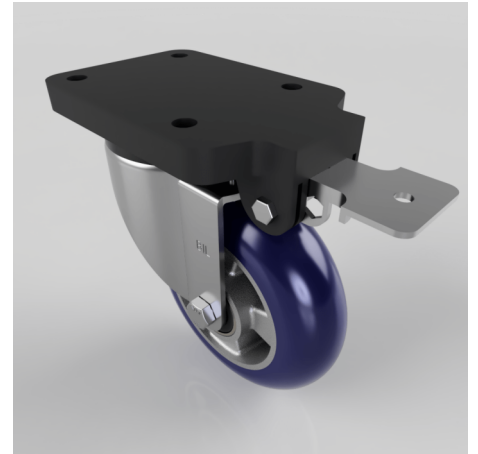


## Blue Ergonomic Polyurethane Swivel Brake Plate Castor 160mm 500kg

**Product code: BZSPH160RSPABJFPSWB**

Pressed steel swivel castor with flat top plate fixing fitted with a round profile 75shore a blue ergonomic polyurethane on aluminium centred wheel with ball bearings and fixed position total lock brake. Wheel diameter 160mm, tread width 50mm, overall height 209mm, top plate 180mm x 115mm, hole centres 105mm x 80mm Load capacity 500kg.



Fixing Option	Plate
Diameter (mm)	160
Load Capacity (kg)	500
Castor Type	Swivel with Fixed Position Total Lock Brake
Height (mm)	209
Wheel Material	Polyurethane on Aluminium
Colour / Shore Hardness	Blue Ergonomic Polyurethane on Aluminium Rim / 75 Shore A
Bearing Type	Ball
Tread (mm)	50
Fork Thickness (mm)	5
Temperature Resistance	-20 °C TO +70 °C
Plate Size (mm)	180 x 115
Hole Centres (mm)	105 x 80
Swivel Radius (mm)	164
Top Plate Thickness (mm)	19
To Suit Fixing Bolt (mm)	10

### BIL GROUP LTD

Porte Marsh Road, Calne, Wiltshire, SN11 9BW

Registered in England No: 2603821

VAT Reg: GB572705729

