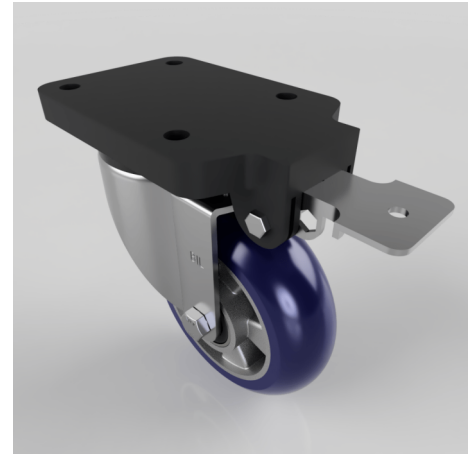


## Blue Ergonomic Speed Polyurethane Swivel Brake Plate Castor 150mm 500kg

**Product code: BZSPH150RSPABJFPSWB**

Pressed steel swivel castor with a top plate fixing fitted with an ergonomic blue 75 shore A polyurethane tyre on aluminium centred wheel with ball bearings and fixed position locked brake. Wheel diameter 150mm, tread width 50mm, overall height 204mm, top plate 135mm x 110mm, hole centres 105mm x 80mm. Load capacity 500kg at 4kph and 190kg at 16kph



Fixing Option	Plate
Diameter (mm)	150
Load Capacity (kg)	500
Castor Type	Swivel with Fixed Position Total Lock Brake
Height (mm)	204
Wheel Material	Polyurethane on Aluminium
Colour / Shore Hardness	Blue Ergonomic Polyurethane on Aluminium Rim / 75 Shore A
Bearing Type	Ball
Tread (mm)	50
Fork Thickness (mm)	5
Temperature Resistance	-20 °C TO +70 °C
Plate Size (mm)	180 x 115
Hole Centres (mm)	105 x 80
Swivel Radius (mm)	164
Top Plate Thickness (mm)	19
To Suit Fixing Bolt (mm)	10