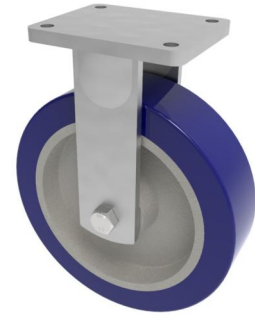


Blue Polyurethane on Cast Iron Plate Fixed Castor 250mm 1400kg Load

Product code: BZQF250SPUCBJ



Fabricated swivel castor with a fixed plate fixing fitted with a 75 shore A 'extra soft' blue polyurethane on cast iron centred wheel with ball bearings. Wheel diameter 250mm, tread width 80mm, overall height 314mm, plate size 175mm x 140mm, hole centres 140mm x 105mm. Load capacity 1400kg at 4kph, 560kg at 10kph and 500g at 16kph ** FOR INTERNAL AND EXTERNAL TOWING USE**

Diameter (mm)	250
Fixing Option	Plate
Castor Type	Fixed
Bearing Type	Ball
Height (mm)	314
Plate Size (mm)	175 X 140
Hole Centres (mm)	140 X 105
To Suit Fixing Bolt (mm)	14
Wheel Material	Polyurethane on Cast Iron
Colour / Shore Hardness	Blue Ergonomic Polyurethane on Cast Iron Rim / 75 Shore A
Temperature Resistance	-30 °C TO +80 °C
Top Plate Thickness (mm)	12
Fork Thickness (mm)	10
Load Capacity (kg)	1400
Tread (mm)	80

BIL GROUP LTD

Porte Marsh Road, Calne, Wiltshire, SN11 9BW

Registered in England No: 2603821

VAT Reg: GB572705729

