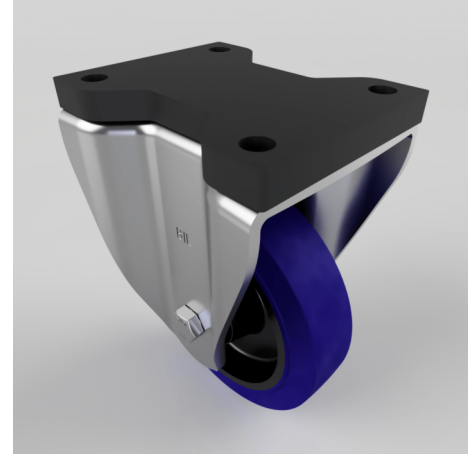


## Blue Rubber Fixed Plate Castor 150mm 300kg

**Product code: BZSPHF150SRNBJFP**

Pressed steel fixed castor with a top plate fixing fitted with a blue 65 shore A elastic rubber tyre on a black nylon centred wheel with ball bearings . Wheel diameter 150mm, tread width 40mm, overall height 204mm, top plate 135mm x 110mm, hole centres 105mm x 80mm. Load capacity 300kg.



Fixing Option	Plate
Diameter (mm)	150
Load Capacity (kg)	300
Castor Type	Fixed
Height (mm)	204
Wheel Material	Rubber on Nylon
Colour / Shore Hardness	Blue Elastic Rubber on Nylon Rim / 65 Shore A
Bearing Type	Ball
Tread (mm)	40
Fork Thickness (mm)	5
Temperature Resistance	-30 °C TO +80 °C
Plate Size (mm)	135 x 110
Hole Centres (mm)	105 x 80
Top Plate Thickness (mm)	19
To Suit Fixing Bolt (mm)	10