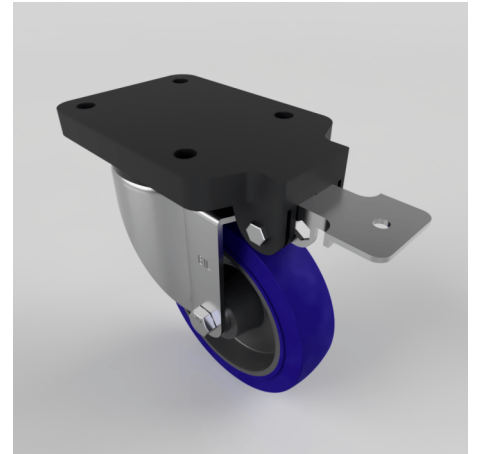


Blue Rubber Swivel Brake Plate Castor 150mm 300kg

Product code: BZSPH150SRNBFPSWB

Pressed steel swivel castor with a top plate fixing fitted with a blue 65 shore A elastic rubber tyre on a black nylon centred wheel with roller bearings and fixed position locked brake . Wheel diameter 150mm, tread width 40mm, overall height 204mm, top plate 180mm x 115mm, hole centres 105mm x 80mm. Load capacity 300kg.



| | |
|--------------------------|---|
| Fixing Option | Plate |
| Diameter (mm) | 150 |
| Load Capacity (kg) | 300 |
| Castor Type | Swivel with Fixed Position Total Lock Brake |
| Height (mm) | 204 |
| Wheel Material | Rubber on Nylon |
| Colour / Shore Hardness | Blue Elastic Rubber on Nylon Rim / 65 Shore A |
| Bearing Type | Roller |
| Tread (mm) | 40 |
| Fork Thickness (mm) | 5 |
| Temperature Resistance | -30 °C TO +80 °C |
| Plate Size (mm) | 180 x 115 |
| Hole Centres (mm) | 105 x 80 |
| Swivel Radius (mm) | 164 |
| Top Plate Thickness (mm) | 19 |
| To Suit Fixing Bolt (mm) | 10 |

BIL GROUP LTD

Porte Marsh Road, Calne, Wiltshire, SN11 9BW

Registered in England No: 2603821

VAT Reg: GB572705729

