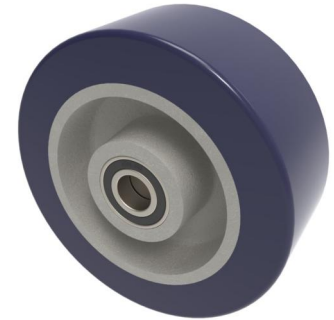


## Blue Soft Polyurethane 75 Shore A 200mm Ball Bearing Wheel 1200kg Load

**Product code: BZXH200WSPUCBJM25**



200mm diameter Blue 75 Shore A polyurethane tyre on cast iron centred wheel with ball bearings. Tread width 80mm, bore 25mm, hub 83mm. Load capacity 1200kg up to 4kph and 480kg at 10kph. Also suitable at 420kg at 16kph intermitantly (ask for advise if towing outdoors on tarmac)

Bearing Type	Ball
Bore Size (mm)	25
Diameter (mm)	200
Hub Width (mm)	83
Load Capacity (kg)	1200
Tread (mm)	80
Wheel Material	Polyurethane on Cast Iron
Colour / Shore Hardness	Blue Polyurethane on Cast Iron Rim / 75 Shore A
Temperature Resistance	-20 °C TO +70 °C

### BIL GROUP LTD

Porte Marsh Road, Calne, Wiltshire, SN11 9BW

Registered in England No: 2603821

VAT Reg: GB572705729

