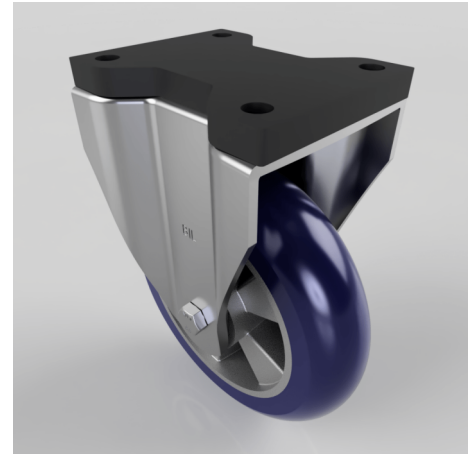


Blue Speed Polyurethane Fixed Plate Castor 200mm 700kg

Product code: BZSPHF200RSPABJFP

Pressed steel fixed castor with a top plate fixing fitted with a ergonomic blue 75 shore A polyurethane tyre on aluminium centred wheel with ball bearings. Wheel diameter 200mm, tread width 50mm, overall height 252mm, top plate 135mm x 110mm, hole centres 105mm x 80mm. Load capacity 700kg at 4kph and 280kg at 16kph



Fixing Option	Plate
Diameter (mm)	200
Load Capacity (kg)	700
Castor Type	Fixed
Height (mm)	252
Wheel Material	Polyurethane on Aluminium
Colour / Shore Hardness	Blue Ergonomic Polyurethane on Aluminium Rim / 75 Shore A
Bearing Type	Ball
Tread (mm)	50
Fork Thickness (mm)	5
Temperature Resistance	-20 °C TO +70 °C
Plate Size (mm)	135 x 110
Hole Centres (mm)	105 x 80
Top Plate Thickness (mm)	19
To Suit Fixing Bolt (mm)	10

BIL GROUP LTD

Porte Marsh Road, Calne, Wiltshire, SN11 9BW

Registered in England No: 2603821

VAT Reg: GB572705729

