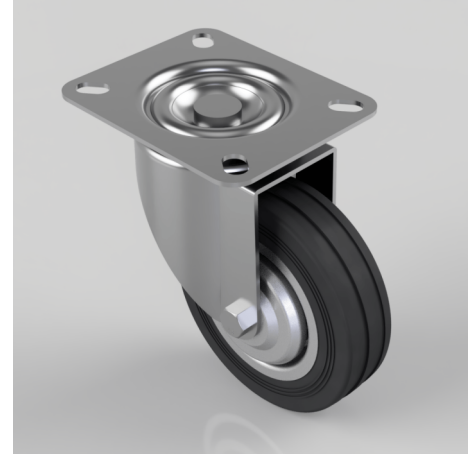


Rubber Plate Swivel 100mm Load 60kg

Product code: 100RMB

Pressed steel swivel castor with a top plate fixing fitted with black rubber tyred on pressed steel centred wheel with a roller bearing Bore. Wheel diameter 100mm, tread width 26mm, overall height 128mm, top plate 102mm x 84mm, hole centres 80mm x 60mm. Load capacity 60kg.



Diameter (mm)	100
Fixing Option	Plate
Castor Type	Swivel
Height (mm)	128
Bearing Type	Roller
Swivel Radius (mm)	85
Wheel Material	Rubber on Steel
Colour / Shore Hardness	Black Rubber on Steel Rim / 85 Shore A
Fork Thickness (mm)	2
Temperature Resistance	-20 °C TO +60 °C
To Suit Fixing Bolt (mm)	8
Tread (mm)	26
Plate Size (mm)	102 x 84
Hole Centres (mm)	80 X 60
Top Plate Thickness (mm)	2

BIL GROUP LTD

Porte Marsh Road, Calne, Wiltshire, SN11 9BW

Registered in England No: 2603821

VAT Reg: GB572705729

