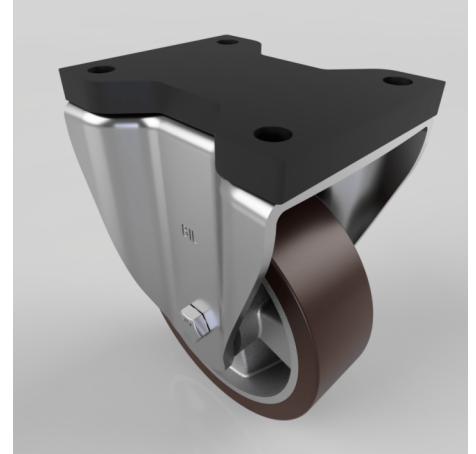


## Brown Polyurethane Fixed Plate Castor 150mm 500kg

**Product code: BZSPHF150PABJFP**

Pressed steel swivel castor with a top plate fixing fitted with a polyurethane tyred aluminium centred wheel with ball bearings. Wheel diameter 150mm, tread width 50mm, overall height 204mm, top plate 135mm x 110mm, hole centres 105mm x 80mm. Load capacity 500kg.



Fixing Option	Plate
Diameter (mm)	150
Load Capacity (kg)	500
Castor Type	Fixed
Height (mm)	204
Wheel Material	Polyurethane on Aluminium
Colour / Shore Hardness	Brown Polyurethane on Aluminium Rim / 93 Shore A
Bearing Type	Ball
Tread (mm)	50
Fork Thickness (mm)	5
Temperature Resistance	-20 °C TO +70 °C
Plate Size (mm)	135 x 110
Hole Centres (mm)	105 x 80
Top Plate Thickness (mm)	19
To Suit Fixing Bolt (mm)	10

### BIL GROUP LTD

Porte Marsh Road, Calne, Wiltshire, SN11 9BW

Registered in England No: 2603821

VAT Reg: GB572705729

