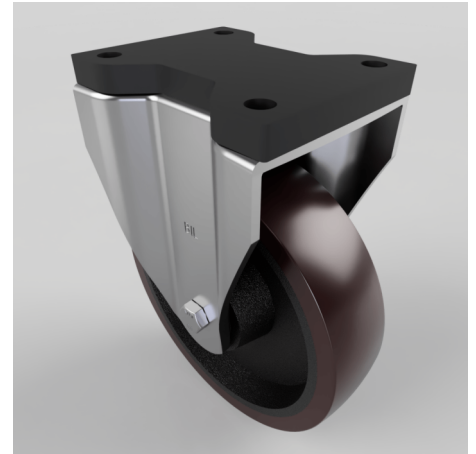


Brown Polyurethane Fixed Plate Castor 200mm 700kg

Product code: BZSPHF200PTBJFP

Pressed steel fixed castor with a top plate fixing fitted with a brown polyurethane tyred cast iron centre wheel with ball bearings. Wheel diameter 200mm, tread width 57mm, overall height 252mm, top plate 135mm x 110mm, hole centres 105mm x 80mm and a Load capacity of 700kg.



| | |
|--------------------------|--|
| Fixing Option | Plate |
| Diameter (mm) | 200 |
| Load Capacity (kg) | 700 |
| Castor Type | Fixed |
| Height (mm) | 252 |
| Wheel Material | Polyurethane on Cast Iron |
| Colour / Shore Hardness | Brown Polyurethane on Cast Iron Rim / 94 Shore A |
| Bearing Type | Ball |
| Tread (mm) | 50 |
| Fork Thickness (mm) | 5 |
| Temperature Resistance | -20 °C TO +80 °C |
| Plate Size (mm) | 135 x 110 |
| Hole Centres (mm) | 105 x 80 |
| Top Plate Thickness (mm) | 19 |
| To Suit Fixing Bolt (mm) | 10 |

BIL GROUP LTD

Porte Marsh Road, Calne, Wiltshire, SN11 9BW

Registered in England No: 2603821

VAT Reg: GB572705729

