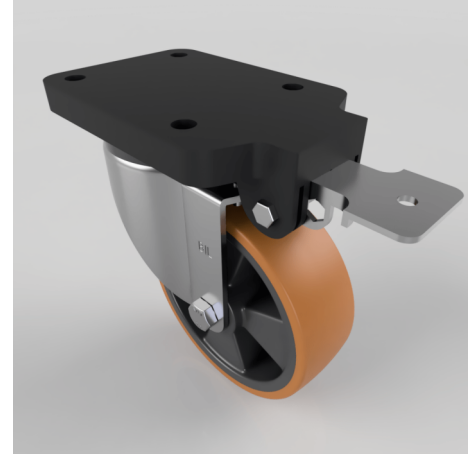


## Brown Polyurethane Swivel Brake Plate Castor 150mm 600kg

**Product code: BZSPH150XPNBFPSWB**

Pressed steel fixed castor with a top plate fixing fitted with a brown polyurethane tyre black nylon centred wheel with roller bearings and a fixed position brake. Wheel diameter 150mm, tread width 50mm, overall height 204mm, top plate 180mm x 115mm, hole centres 105mm x 80mm. Load capacity 600kg at 4kph.



Fixing Option	Plate
Diameter (mm)	150
Load Capacity (kg)	600
Castor Type	Swivel with Fixed Position Total Lock Brake
Height (mm)	204
Wheel Material	Polyurethane on Nylon
Colour / Shore Hardness	Brown Polyurethane on Nylon Rim / 96 Shore A
Bearing Type	Roller
Tread (mm)	50
Fork Thickness (mm)	5
Temperature Resistance	-20 °C TO +60 °C
Plate Size (mm)	180 x 115
Hole Centres (mm)	105 x 80
Swivel Radius (mm)	164
Top Plate Thickness (mm)	19
To Suit Fixing Bolt (mm)	10

### BIL GROUP LTD

Porte Marsh Road, Calne, Wiltshire, SN11 9BW

Registered in England No: 2603821

VAT Reg: GB572705729

