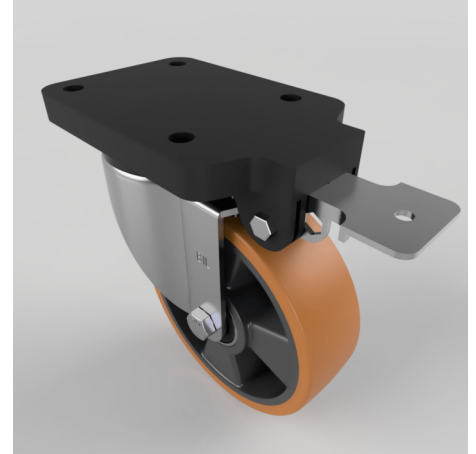


Brown Polyurethane Swivel Brake Plate Castor 160mm 600kg

Product code: BZSPH160XPNBJFPSWB

Pressed steel fixed castor with a top plate fixing fitted with a brown polyurethane tyre black nylon centred wheel with ball bearings and a fixed position brake. Wheel diameter 160mm, tread width 50mm, overall height 209mm, top plate 180mm x 115mm, hole centres 105mm x 80mm. Load capacity 600kg at 4kph.



Fixing Option	Plate
Diameter (mm)	160
Load Capacity (kg)	600
Castor Type	Swivel with Fixed Position Total Lock Brake
Height (mm)	209
Wheel Material	Polyurethane on Nylon
Colour / Shore Hardness	Brown Polyurethane on Nylon Rim / 96 Shore A
Bearing Type	Ball
Tread (mm)	50
Fork Thickness (mm)	5
Temperature Resistance	-20 °C TO +60 °C
Plate Size (mm)	180 x 115
Hole Centres (mm)	105 x 80
Swivel Radius (mm)	164
Top Plate Thickness (mm)	19
To Suit Fixing Bolt (mm)	10

BIL GROUP LTD

Porte Marsh Road, Calne, Wiltshire, SN11 9BW

Registered in England No: 2603821

VAT Reg: GB572705729

