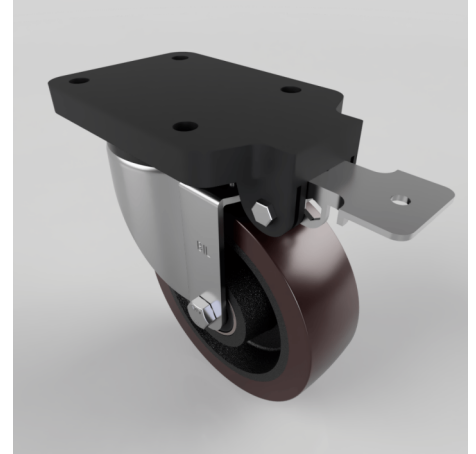


## Brown Polyurethane Swivel Brake Plate Castor 160mm 700kg

**Product code: BZSPH160PTBJFPSWB**

Pressed steel swivel castor with a top plate fixing fitted with a brown 94 shore A polyurethane tyre cast iron centred wheel with ball bearings and fixed position total lock brake. Wheel diameter 160mm, tread width 50mm, overall height 204mm, top plate 135mm x 110mm, hole centres 105mm x 80mm. Load capacity 700kg at 4kph.



Fixing Option	Plate
Diameter (mm)	160
Load Capacity (kg)	700
Castor Type	Swivel with Fixed Position Total Lock Brake
Height (mm)	209
Wheel Material	Polyurethane on Cast Iron
Colour / Shore Hardness	Brown Polyurethane on Cast Iron Rim / 94 Shore A
Bearing Type	Ball
Tread (mm)	50
Fork Thickness (mm)	5
Temperature Resistance	-20 °C TO +80 °C
Plate Size (mm)	180 x 115
Hole Centres (mm)	105 x 80
Swivel Radius (mm)	164
Top Plate Thickness (mm)	19
To Suit Fixing Bolt (mm)	10

## BIL GROUP LTD

Porte Marsh Road, Calne, Wiltshire, SN11 9BW

Registered in England No: 2603821

VAT Reg: GB572705729

