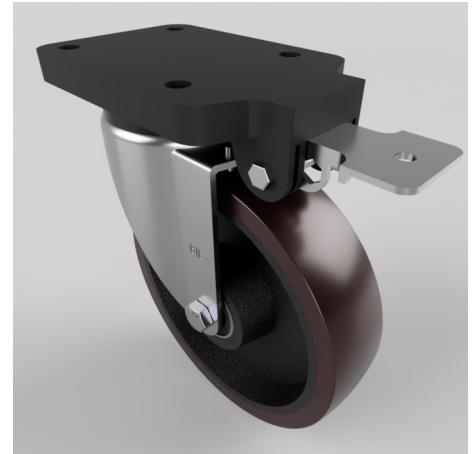


Brown Polyurethane Swivel Brake Plate Castor 200mm 700kg

Product code: BZSPH200PTBJFPSWB

Pressed steel swivel castor with a top plate fixing fitted with a brown polyurethane tyred cast iron centre wheel with ball bearings and fixed position total lock brake. Wheel diameter 200mm, tread width 57mm, overall height 252mm, top plate 135mm x 110mm, hole centres 105mm x 80mm and a Load capacity of 700kg.



Fixing Option	Plate
Diameter (mm)	200
Load Capacity (kg)	700
Castor Type	Swivel with Fixed Position Total Lock Brake
Height (mm)	252
Wheel Material	Polyurethane on Cast Iron
Colour / Shore Hardness	Brown Polyurethane on Cast Iron Rim / 94 Shore A
Bearing Type	Ball
Tread (mm)	50
Fork Thickness (mm)	5
Temperature Resistance	-20 °C TO +80 °C
Plate Size (mm)	180 x 115
Hole Centres (mm)	105 x 80
Swivel Radius (mm)	164
Top Plate Thickness (mm)	19
To Suit Fixing Bolt (mm)	10

BIL GROUP LTD

Porte Marsh Road, Calne, Wiltshire, SN11 9BW

Registered in England No: 2603821

VAT Reg: GB572705729

